



# FON Management Console

How to do a firmware upgrade?

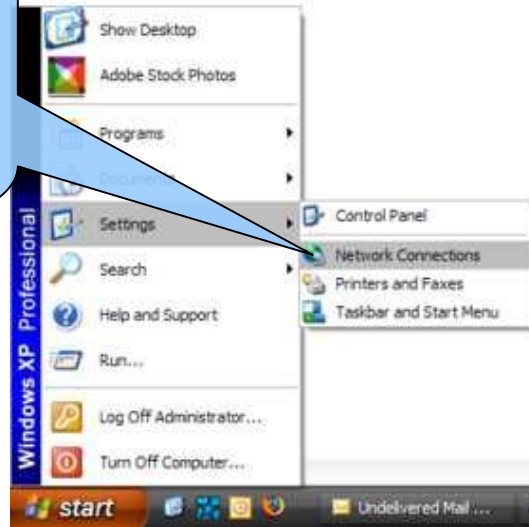


- Disconnect the LAN cable for the internet to your La Fonera
- Connect the LAN cable from your La Fonera to your the computer



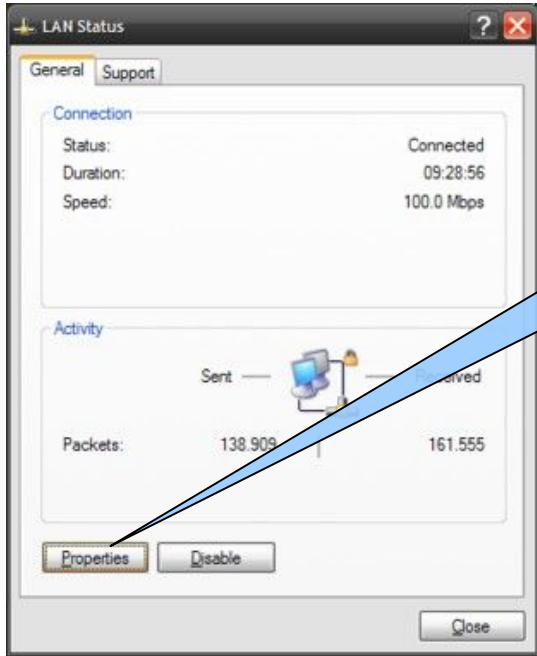
Press „Start“,  
„Settings“ and  
„Network  
Connections“

1



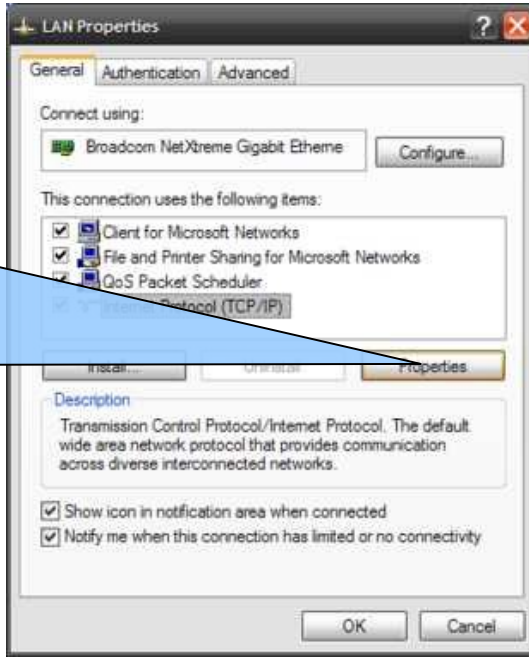
Press  
„Properties“

2



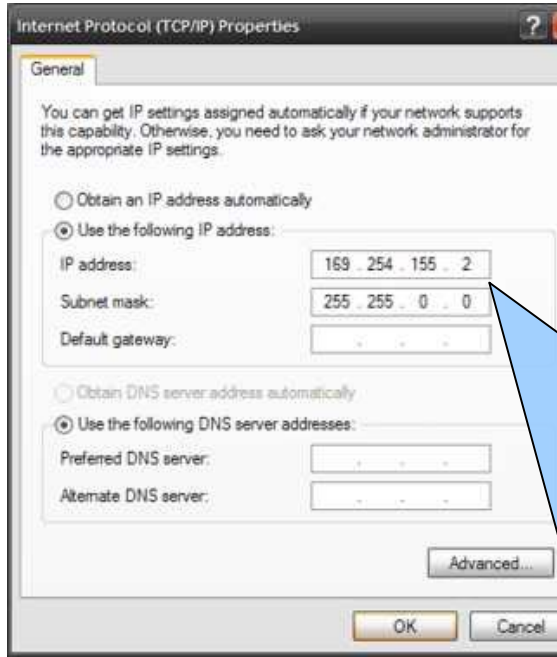
Click  
„Internet  
Protocol  
(TCP/IP)“ and  
press  
„Properties“

3



Click „Use the  
following IP  
adress“ and  
enter:  
IP address:  
**169.254.155.2**  
And Subnet  
mask:  
**255.255.0.0**  
The rest can be  
left blank

4



Access the FON Management Console via „http://169.254.255.1“

**Router Status**

**Konfigurations-Zusammenfassung**  
Firmware Version: 0.7.1 r1

**Internetverbindung**  
Verbindungstyp: DHCP  
IP Adresse: 192.168.5.20  
Gateway Adresse: 192.168.5.1  
DNS Server: 213.134.45.129

**WiFi Einstellungen**  
Öffentliche SSID: FON\_portable  
Private SSID: my\_portable  
Verschlüsselung: mixed  
IP Adresse: 192.168.10.1

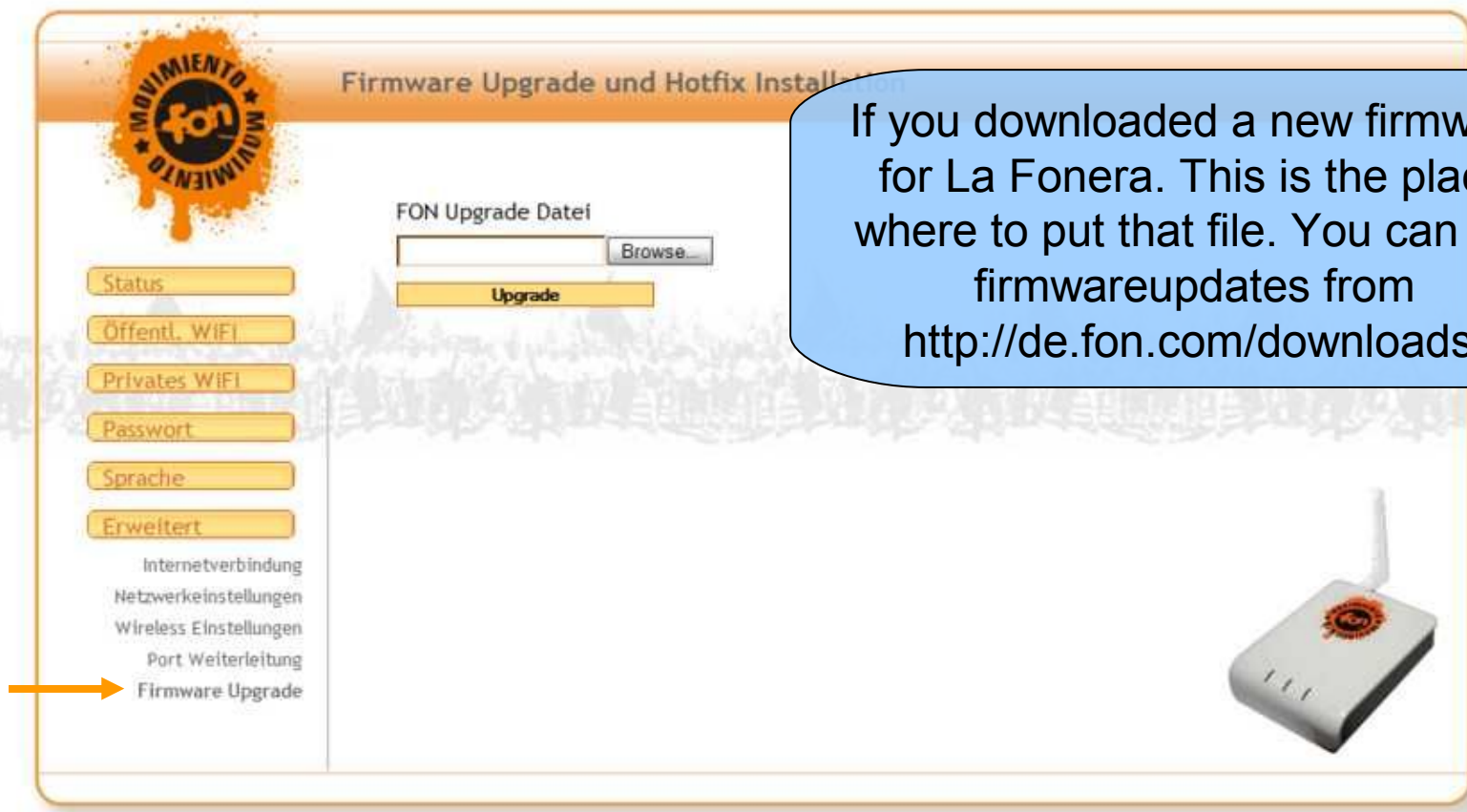
Navigation buttons: Status, Öffentl. WiFi, Privates WiFi, Passwort, Sprache, Erweitert



The screenshot shows the FON Router GUI with the 'Router Status' page. A sidebar on the left contains navigation buttons: Status, Öffentl. WiFi, Privates WiFi, Passwort, Sprache, and Erweitert. The main content area is titled 'Konfiguration-Zusammenfassung' and includes sections for 'Firmware Version', 'Internetverbindungen', and 'WiFi Einstellungen'. An 'Authentication Required' dialog box is overlaid on the screen, prompting for a username and password for 'OpenWrt' at the current IP address. The dialog shows 'admin' entered in the 'User Name' field and a masked password in the 'Password' field. A checkbox for 'Use Password Manager' is checked. A blue callout bubble points to the 'admin' username in the dialog.

You can get access to the setting of your La Fonera with the user name „admin“ and passwort „admin“





The screenshot shows the FON Router GUI's 'Firmware Upgrade und Hotfix Installation' page. On the left, a sidebar menu includes 'Status', 'Öffentl. WiFi', 'Privates WiFi', 'Passwort', 'Sprache', and 'Erweitert'. Under 'Erweitert', there are sub-menus: 'Internetverbindung', 'Netzwerkeinstellungen', 'Wireless Einstellungen', 'Port Weiterleitung', and 'Firmware Upgrade', which is highlighted by an orange arrow. The main content area features the 'FON Upgrade Datei' section with a file input field, a 'Browse...' button, and an 'Upgrade' button. The FON logo is visible in the top left corner of the GUI.

If you downloaded a new firmware for La Fonera. This is the place where to put that file. You can get firmwareupdates from <http://de.fon.com/downloads/>

